

The University of Chicago Library
Conservation Unit
Housing Report



Fig. 1. The limp parchment binding.

| | | | |
|---------------------------------|--|--------------------|--|
| Call # | XX KD 200 1572 C6 A47 | Title | N/A |
| Author | N/A | Imprint | N/A |
| Owning Library | Law Library | Materials | Parchment covers, alum tawed thongs, handmade laid papers, brown ink |
| Item Type | Bound manuscript | Dimensions | H 28.8cm x W 20.1cm x T 1.9cm |
| | | | |
| SCRC Pre-Treatment Note | | N/A | |
| Ann's Proposed Treatment | | Drop spine box. | |
| Treatment Type | | Housing | |
| Report by | Yungjin Shin | Report Date | July 13, 2021 |
| Consulted with | Ann Lindsey, Head of Conservation at the University of Chicago Library | | |

Description

This limp parchment binding is in a vulnerable state, as the textblock is not protected by its covers and the parchment case is sensitive to the surrounding environment. The binding will be protected greatly by storing it in a custom-made enclosure. It was decided to make a cloth-covered, double wall drop spine box for the binding.

Housing Process

1. Marked the dimensions of book on binder's board.
2. Trimmed the binder's board to sizes for the bottom tray.

3. Set pieces in place and made any adjustments.
 4. Glued inside walls to outside walls and dry in a press for an hour.
 - Applied PVA and then wait for ~20 sec before pressing.
 - Sanded anything that sticks out.
 5. Glued the walls to the tray.
 - Used wooden cubes to straighten the wall attachment.
 6. Cut a piece of bookcloth.
 7. Marked where the tray sits on the bookcloth.
 - Bottom: leave ~1".
 - Top: leave enough to go over the walls & onto the base.
 8. Glued out the outside of the tray walls.
 9. Adhered the bookcloth by "walking" the tray sideways.
 - Pulled the cloth tightly to avoid gaps on the corners.
 - Used Teflon folder to bone it down.
 10. Bottom of the tray:
 - Roughly trimmed the corners of the bookcloth diagonally.
 - Glued out the bookcloth on the bottom and adhere to the tray.
 11. Top of the tray:
 - Made cuts on the corners, as shown in the diagrams.
 12. Folded the cloth over walls and trim in 45° at the corners.
 13. Glued the flaps in order of long side—flaps—short side.
 14. Lined inside of tray with Mohawk or Permalife.
 - From corners around the 4th edge about 1".
 15. Made the top tray using same procedure as the bottom tray.
 - Started from dimensions of the bottom tray instead of the object.
 16. Trimmed the binder's board to sizes for the cover.
 - Made recessed label space on the spine piece.
 17. Cut a piece of bookcloth bigger than the boards.
 18. Attached the boards to the cloth with PVA. Trimmed the corners of the cloth and made the turn-ins.
 19. Cut a piece of bookcloth to cover the inner center of the cover and glued it.
 20. Attached the trays to the cover.
- ✓ 8 total housing hours.

Appendix I: Extra Photos of the Limp Parchment Binding and Its Drop Spine Box



Image 1. Three-quarter front.



Image 2. Three-quarter back.



Image 3. Spine.



Image 4. Fore edge.

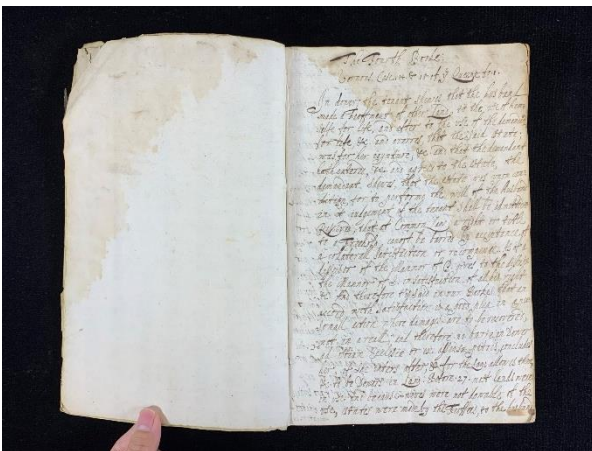


Image 5. First written page.

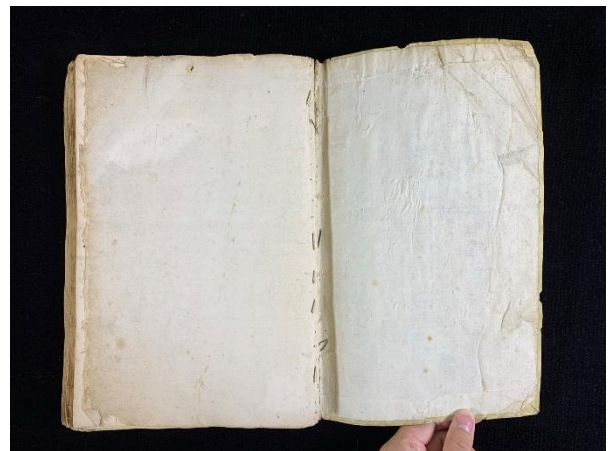


Image 6. Back endsheet.

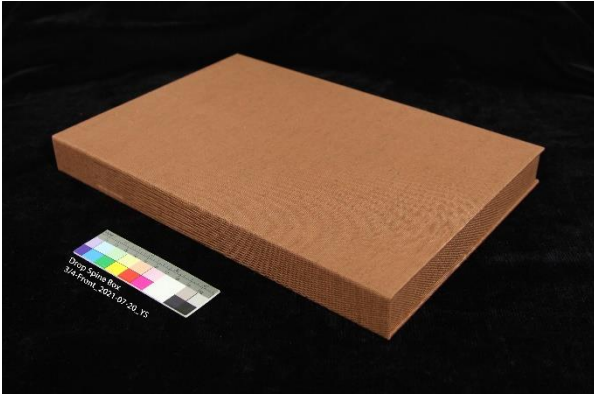


Image 7. Three-quarter, front, of the box.

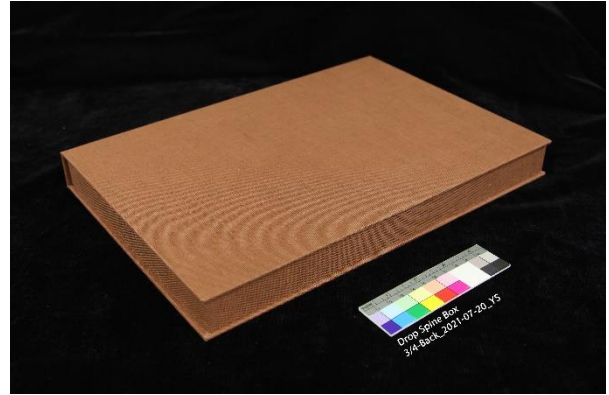


Image 8. Three-quarter, back, of the box.



Image 9. Spine of the box.



Image 10. Opening of the box with the book.



Image 11. Opening of the box.